



**FORTUNE & COATES**

The People's Estate Agent

<https://www.fortuneandcoates.co.uk>



**19 Chamberlain Close, Harlow, CM17 9QP**

**Guide price £365,000**

Fortune and Coates are pleased to offer to the market this three bedroom end of terrace family home situated in the popular Church Langley location of Chamberlain close which is within walking distance of schools, shops amenities and within close proximity of the A414, Harlow Town Train station and the new M11 7a junction. The property comprises entrance hall, lounge with bay window, kitchen/diner with range of wall and base units with some integrated appliances, conservatory with french doors leading out to the garden. Upstairs the master bedroom benefits an en-suite shower room, two further bedrooms and a family bathroom. Outside, the rear garden is low maintenance with artificial grass and decked area. Viewing this property is a must.

Lounge 14'6" x 12'4" (4.42 x 3.76)

Kitchen/Diner 15'7" x 9'7" (4.76 x 2.94)

Conservatory 13'6" x 9'3" (4.14 x 2.83)

Master Bedroom 11'4" x 9'11" (3.47 x 3.04)

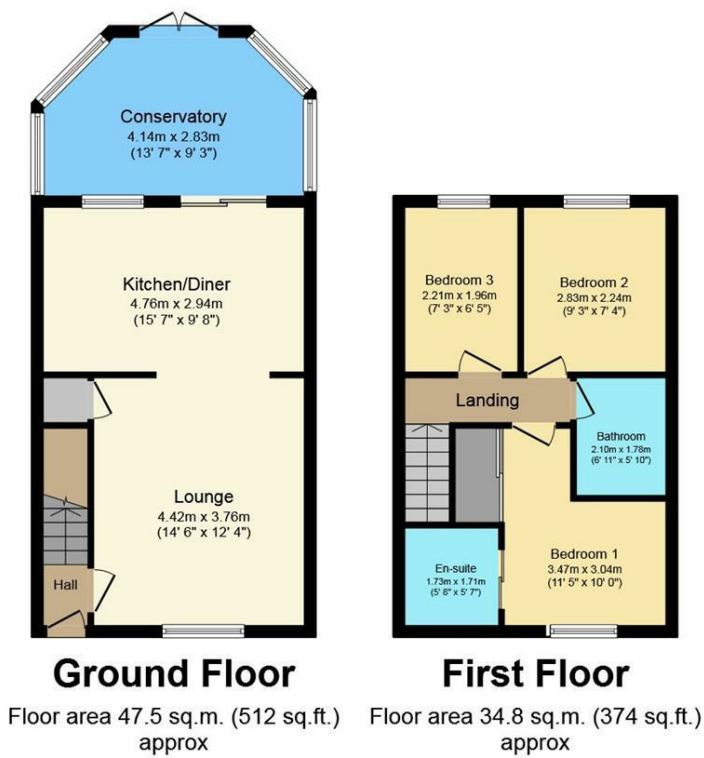
Bedroom Two 9'3" x 7'4" (2.83 x 2.24)

Bedroom Three 7'3" x 6'5" (2.21 x 1.96)

Please note that these particulars do not form part of any offer or contract. All descriptions, photographs and plans are for guidance only and should not be relied upon as statements or representations of fact. All measurements are approximate.



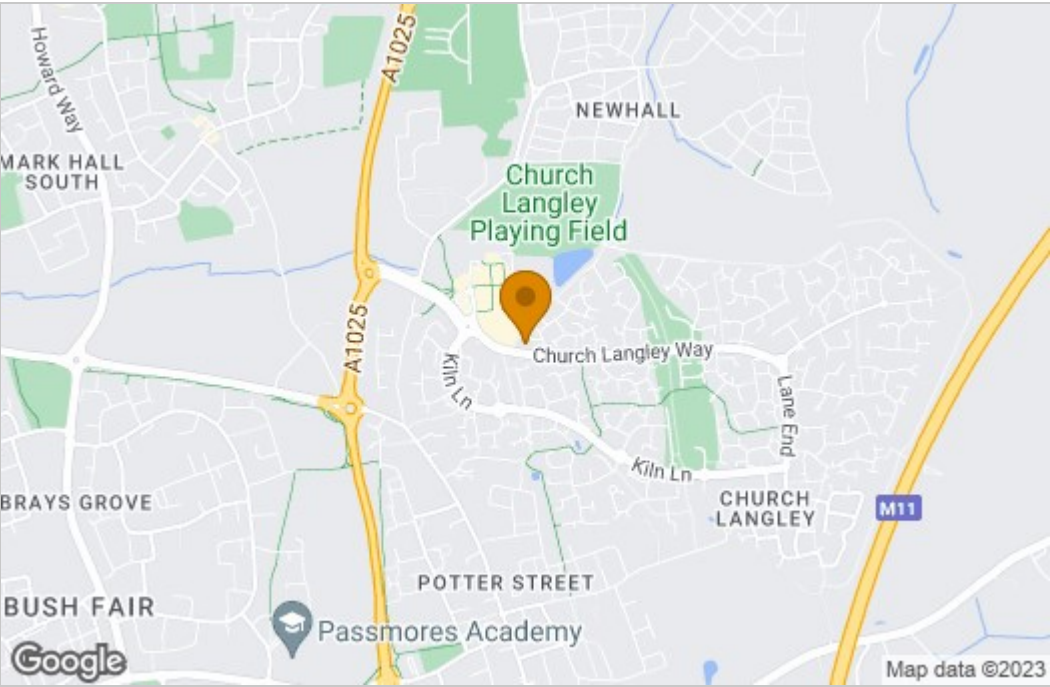
Floor Plan



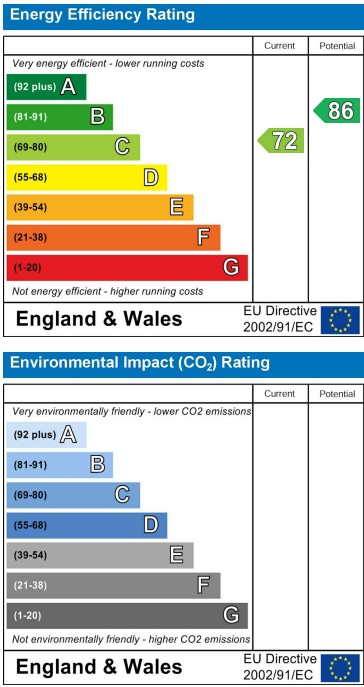
Total floor area 82.3 sq.m. (886 sq.ft.) approx

This Floor Plan is for illustration purposes only and may not be representative of the property. The position and size of doors, windows and other features are approximate. Unauthorized reproduction prohibited. © PropertyBOX

Area Map



Energy Efficiency Graph



These particulars, whilst believed to be accurate are set out as a general outline only for guidance and do not constitute any part of an offer or contract. Intending purchasers should not rely on them as statements of representation of fact, but must satisfy themselves by inspection or otherwise as to their accuracy. No person in this firms employment has the authority to make or give any representation or warranty in respect of the property.